



CITY OF MIAMI

ATHALIE RANGE PARK

NEW COMMUNITY CENTER FINAL CONCEPT PRESENTATION

05.30.2023

CartyArchitecture



• **Commissioner**
Christine King
Commission District 5

• **Parks and Recreation Department**
Chris Evans, Interim Director Parks and Recreation
LaCleveia Morley, Assistant Director
Parks and Recreation

• **Office of Capital Improvements**
Hector L. Badia, Interim Director OCI
Jorge L. Mora, Assistant Director OCI
Sandra Vega, Sr. Project Manager OCI

CartyArchitecture

Judy Carty AIA, RiD, NCARB, LEED AP
Principal-In-Charge / President

Bernardo Flores-Sahagun AR
Senior Project Manager

Carlos Manuel Veloso RA, RiD
Project Manager

Claudia Rodriguez NCARB
Masterplan and Design Coordinator



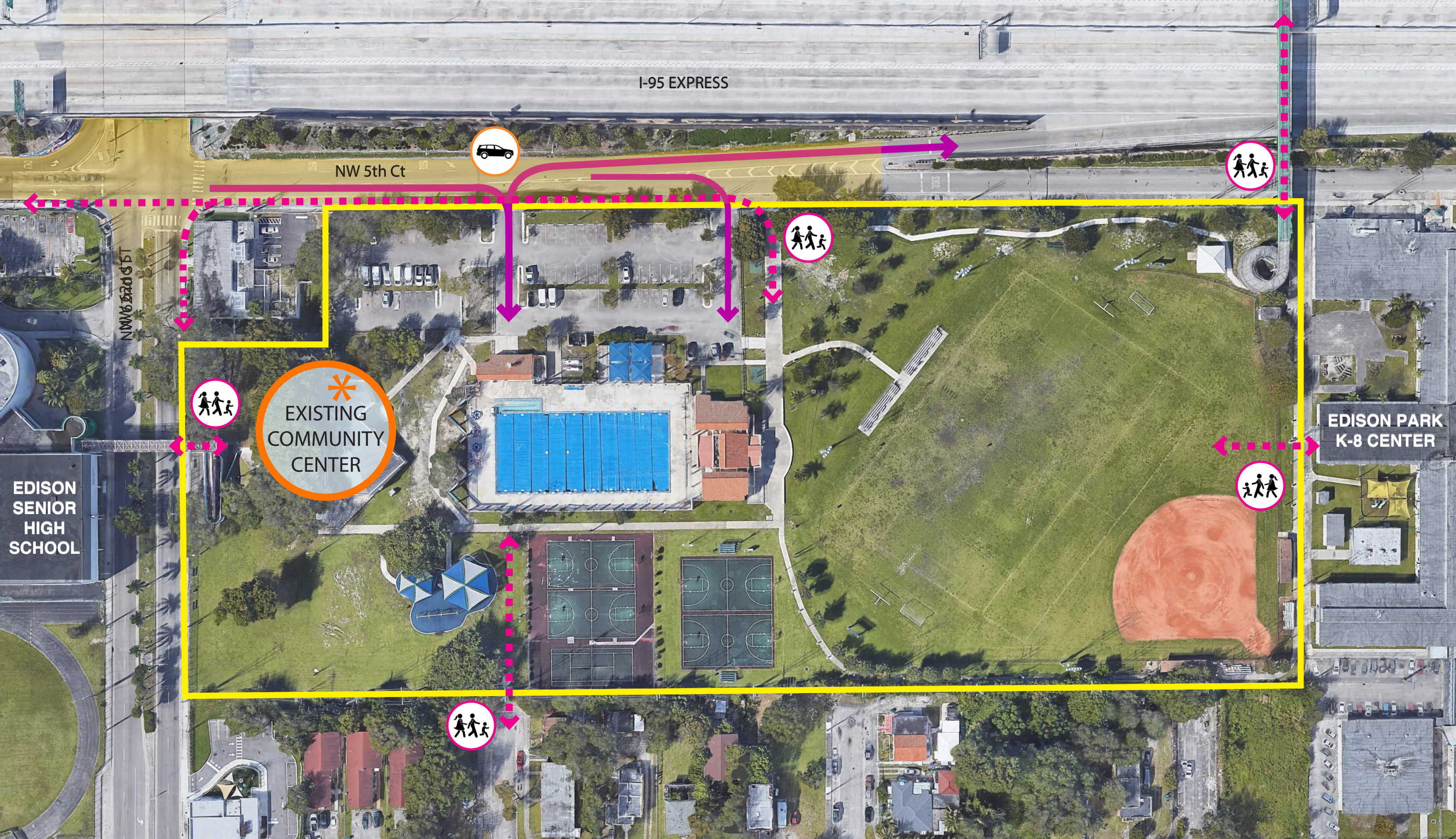
I-95 EXPRESS

NW 5th Ct

NW 4th AVENUE

NW 62nd ST





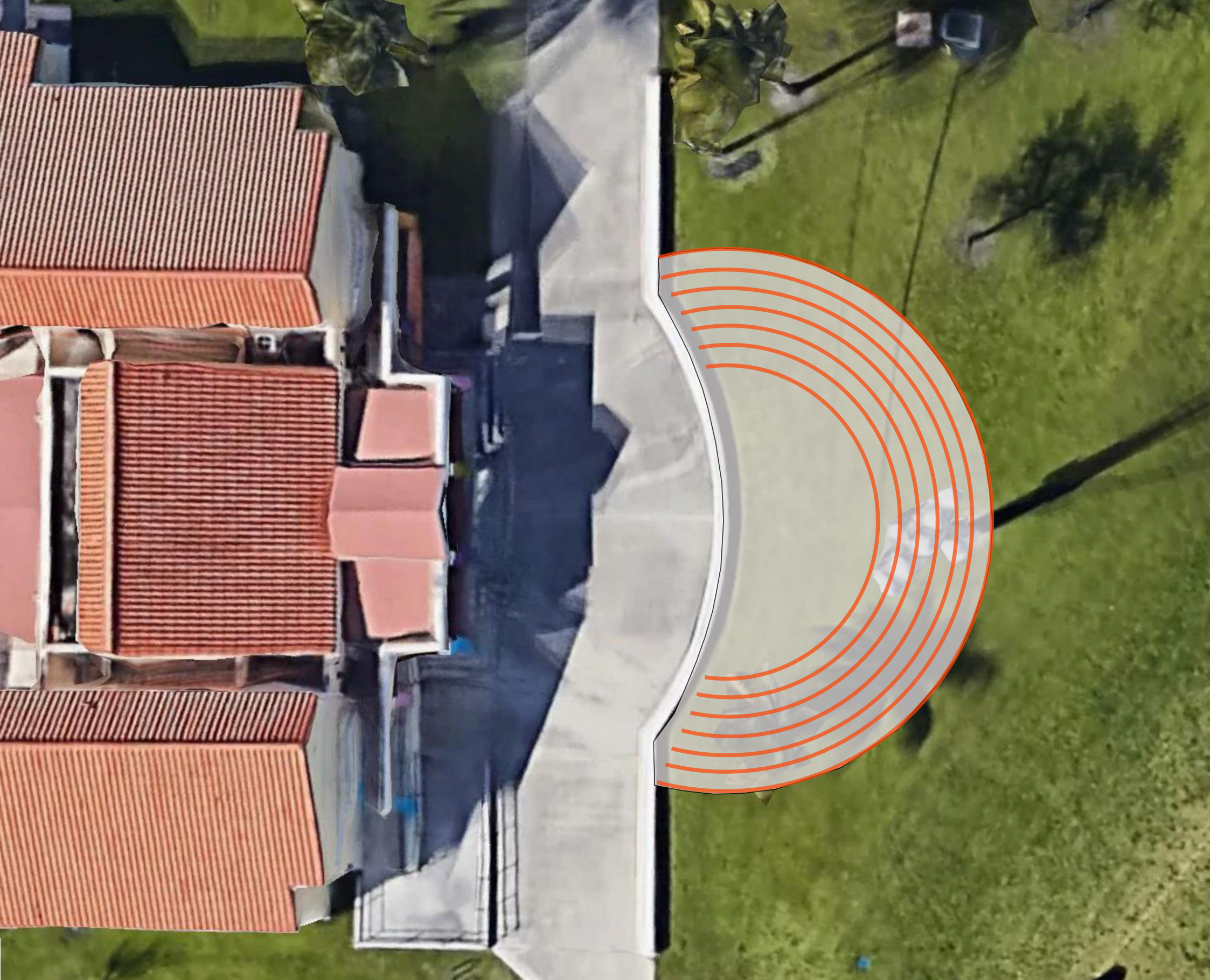








- Consolidate building entry points







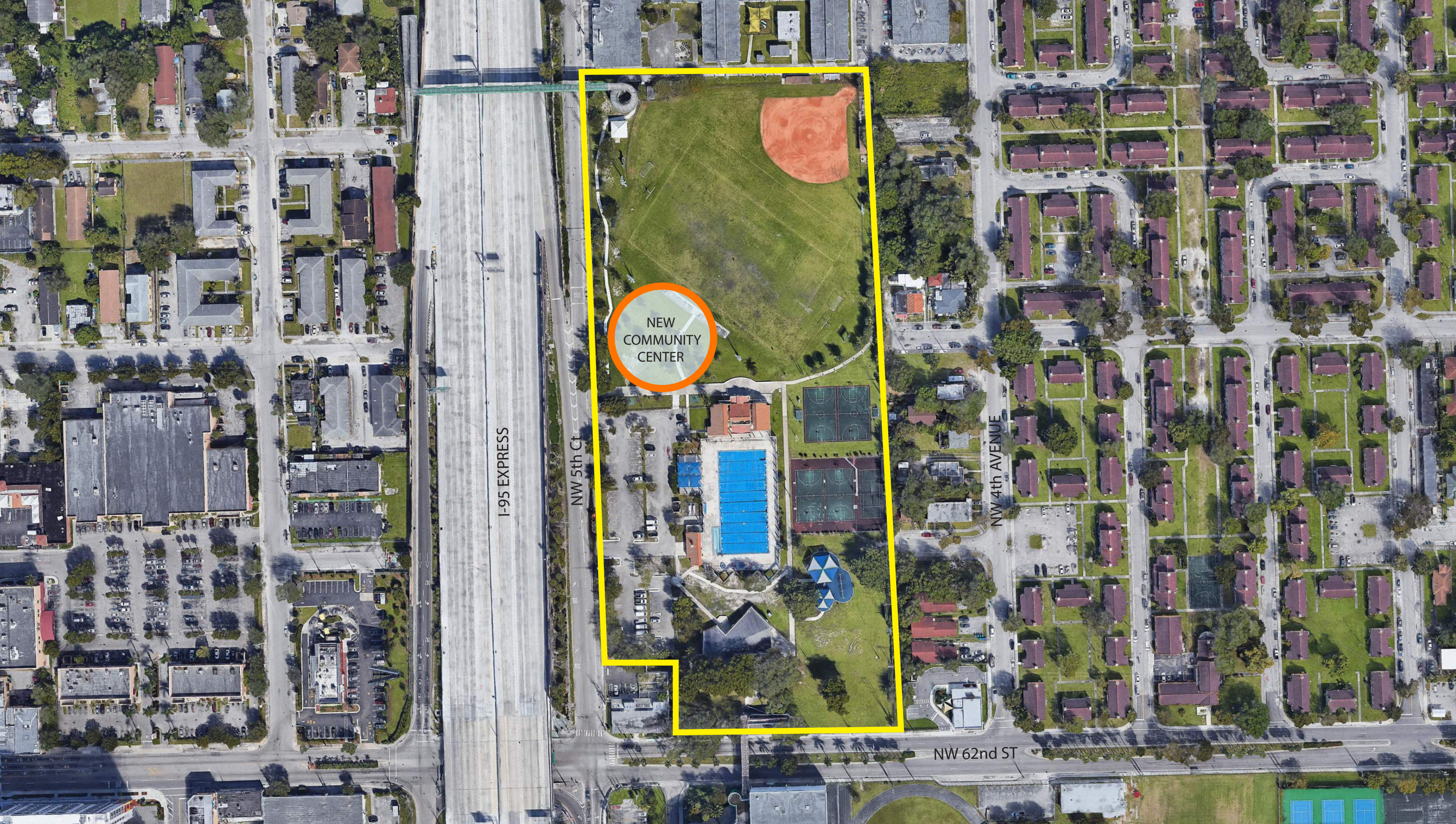
- Reconstruction of courts



NEW COMMUNITY CENTER

Range Park Program From Parks and Recreation 11/18/2022

SPACES	NET SF (APPROX)	NOTES (# OF STUDENTS & FACULTY)
ENTRANCE RECEPTION AREA	526	
LARGE INTERIOR STORAGE (TABLE, CHAIRS)	260	
LARGE RECREATION MULTI-PURPOSE ROOM.	2,840	
WARMING KITCHEN AREA	375	
COMPUTER LAB	447	
HOMEWORK ROOM 1	400	15 STUDENTS
HOMEWORK ROOM 2	435	15 STUDENTS
HOMEWORK ROOM 3	390	15 STUDENTS
PARK MANAGER'S OFFICE	157	
PARK MANAGER'S CLOSET	37	
ONE (1) ARTS AND CRAFT ROOM WITH A SINK.	311	
FITNESS CENTER RESTROOMS	105	
INDOOR / OUTDOOR RESTROOMS	506	
IT CLOSET WITH LAPTOP CHARGING STATIONS	68	
FITNESS ROOM	1,106	
JANITOR CLOSET	51	
LARGE SPORT EQUIPMENT STORAGE W/ EXTERIOR ACCESS	156	
ELECTRICAL ROOM 1	116	
ELECTRICAL ROOM 2	83	
MAINTENANCE ROOM - External Access	428	
MECHANICAL ROOM 1	158	
MECHANICAL ROOM 2	147	
SUB-TOTAL	9,102	
CIRCULATION	1,048	
TOTAL NET SF	10,150	
TOTAL GROSS SF	11,568	







SITE



TOTAL GROSS : 11,568 SF

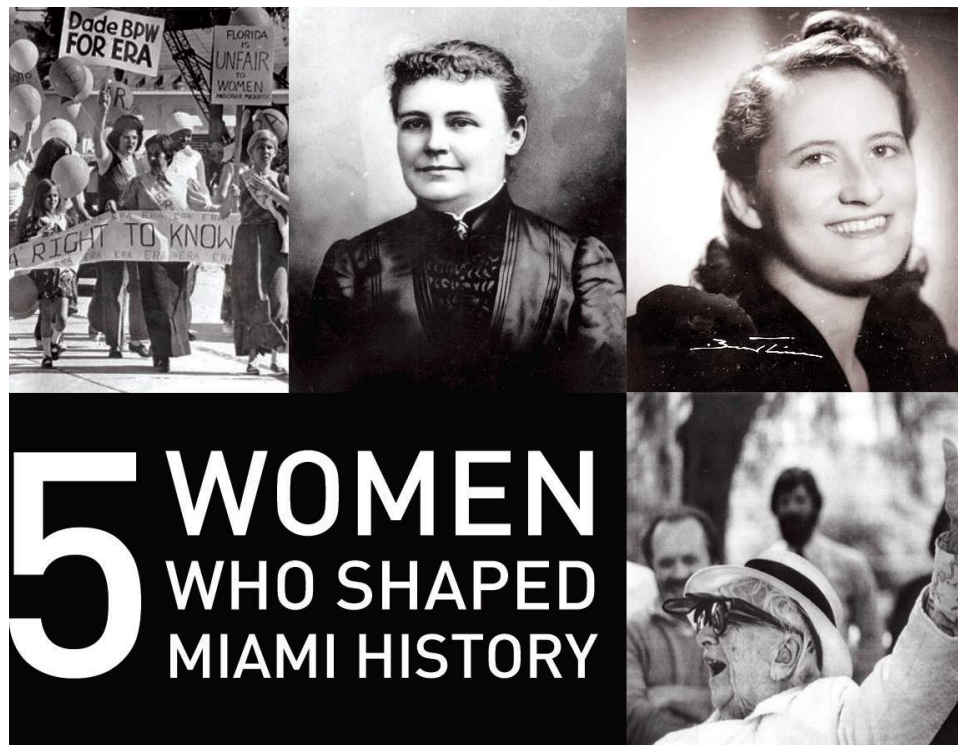




REMEMBERING ATHALIE RANGE

- Activist / Business Woman / politician
- First African American to serve the Miami City Commission
- First woman to head Florida State Agency as Secretary of the Department of Community Affairs

*** CREATE TRIBUTE**













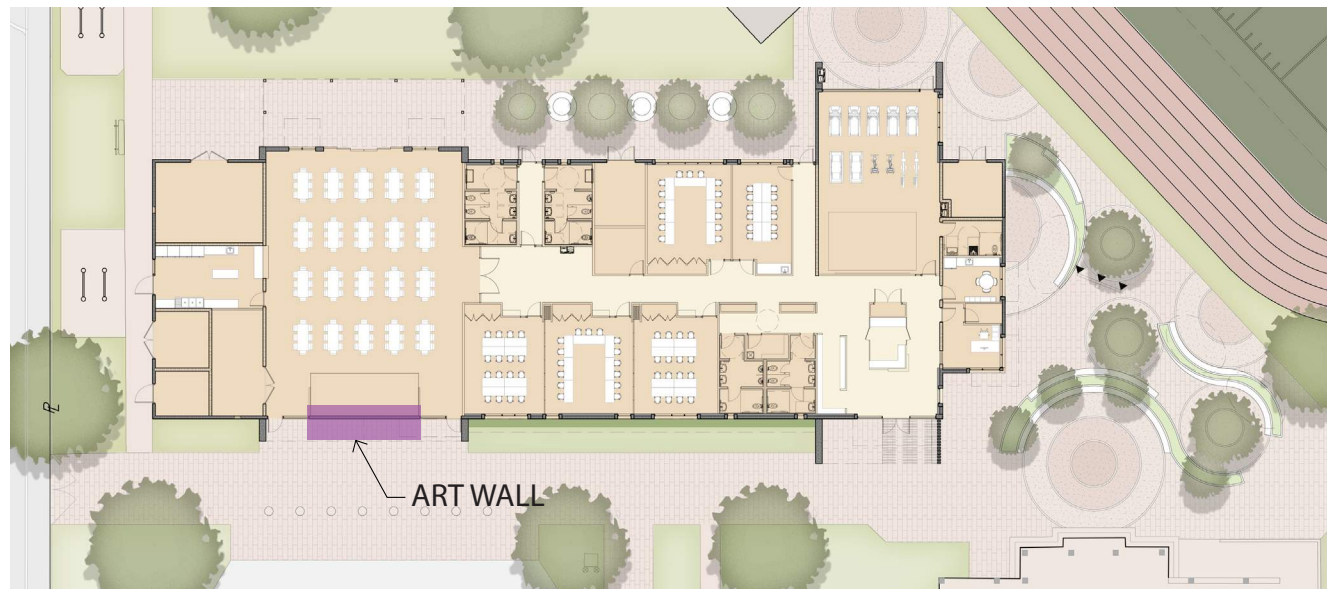




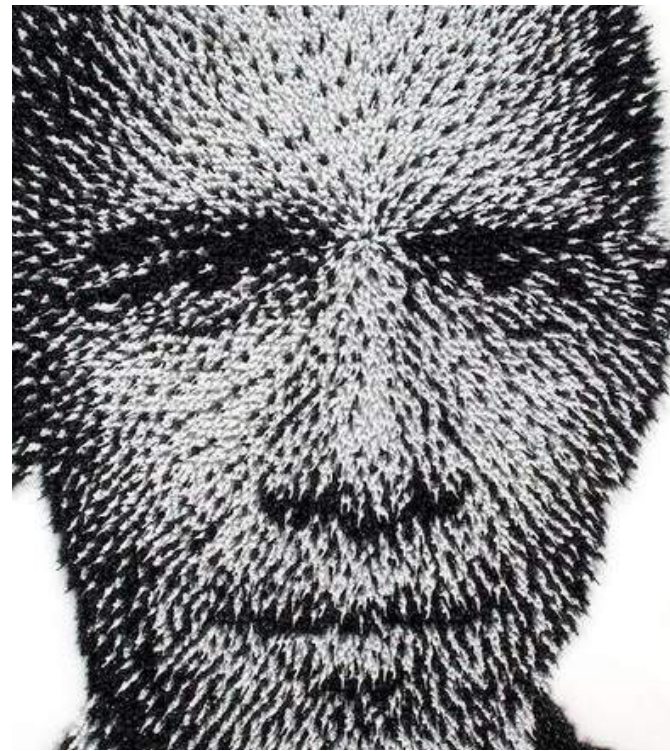




ART IN PUBLIC PLACES



1.



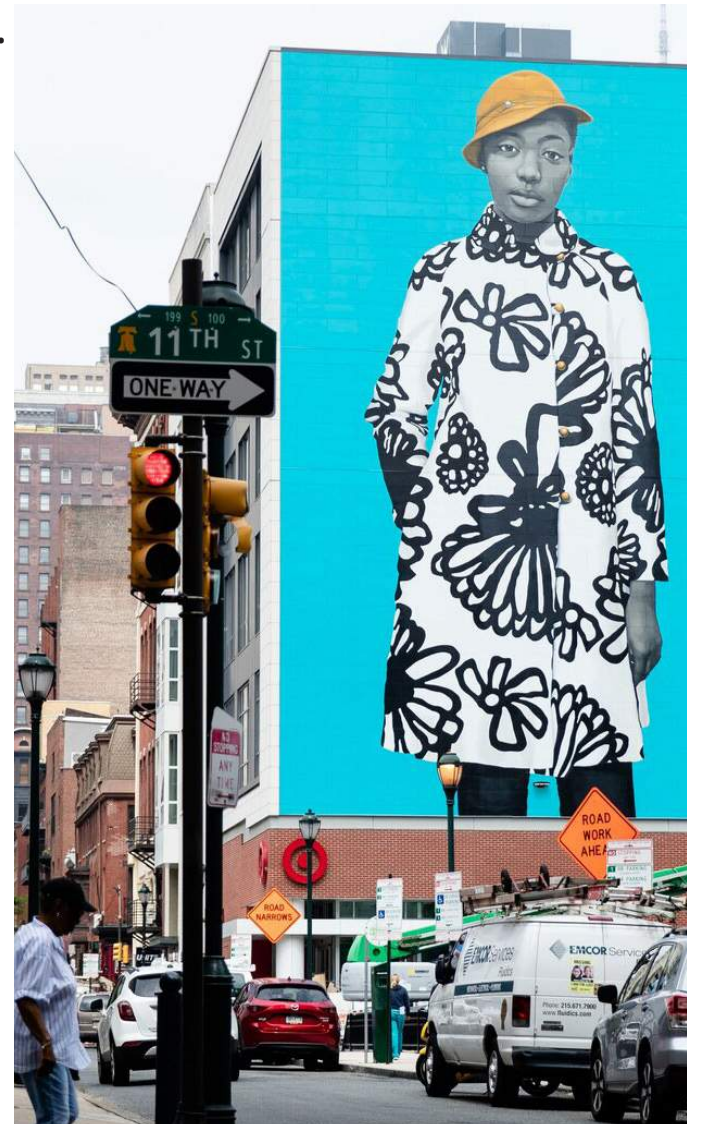
3.

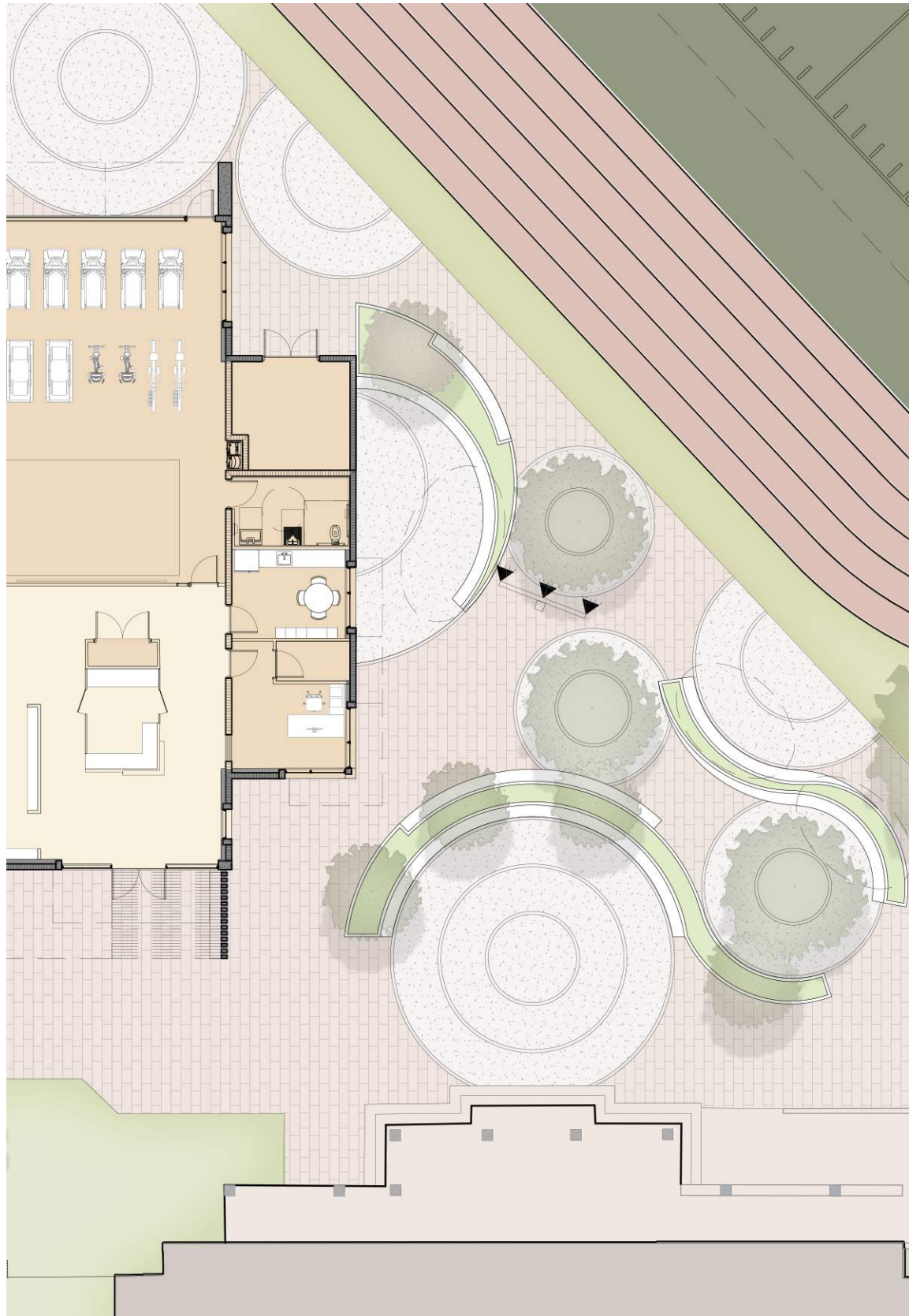


2.



4.





THANK YOU FOR JOINING US!

Questions / Comments:
Contact the Office of Capital Improvements (OCI)



Phone: **(305) 416-1280**

Email: **askOCI@miamigov.com**

Project Webpage: **www.miamigov.com/OCI (district 5)**

Your input is very important to us!

CartyArchitecture