



Miami River Greenway Project and Roadway Improvements at Gerry Curtis Park City of Miami District 1



Alejandro A. Leon, PE

Office of Capital Improvements (OCI)

May (week of 5/xx) 2022





Project Need and Purpose

- Extends the Miami River Greenway
- The Miami River Greenway is an urban greenway project that will eventually form an uninterrupted walkway from the mouth of the river in Downtown Miami to the Dolphin Expressway near the Civic Center area.
- Follows the Miami River Greenway Action Plan
- Correct current deficiencies in the alignment of NW North River Drive
- Provide a Rectangular Flashing beacon to enhance connectivity between sections of the park North and South of the Roadway
- Provide Decorative street lighting, landscaping, and greenway elements.



Project Consists of Two Sections:

Section A (BLUE) - Roadway Improvements from NW 24th Avenue to NW 22nd Avenue on NW N. River, including NW 24th Avenue

Section B (RED)- Improvements to existing riverwalk inside the Gerry Curtis Park





Project Consists of Two Sections:

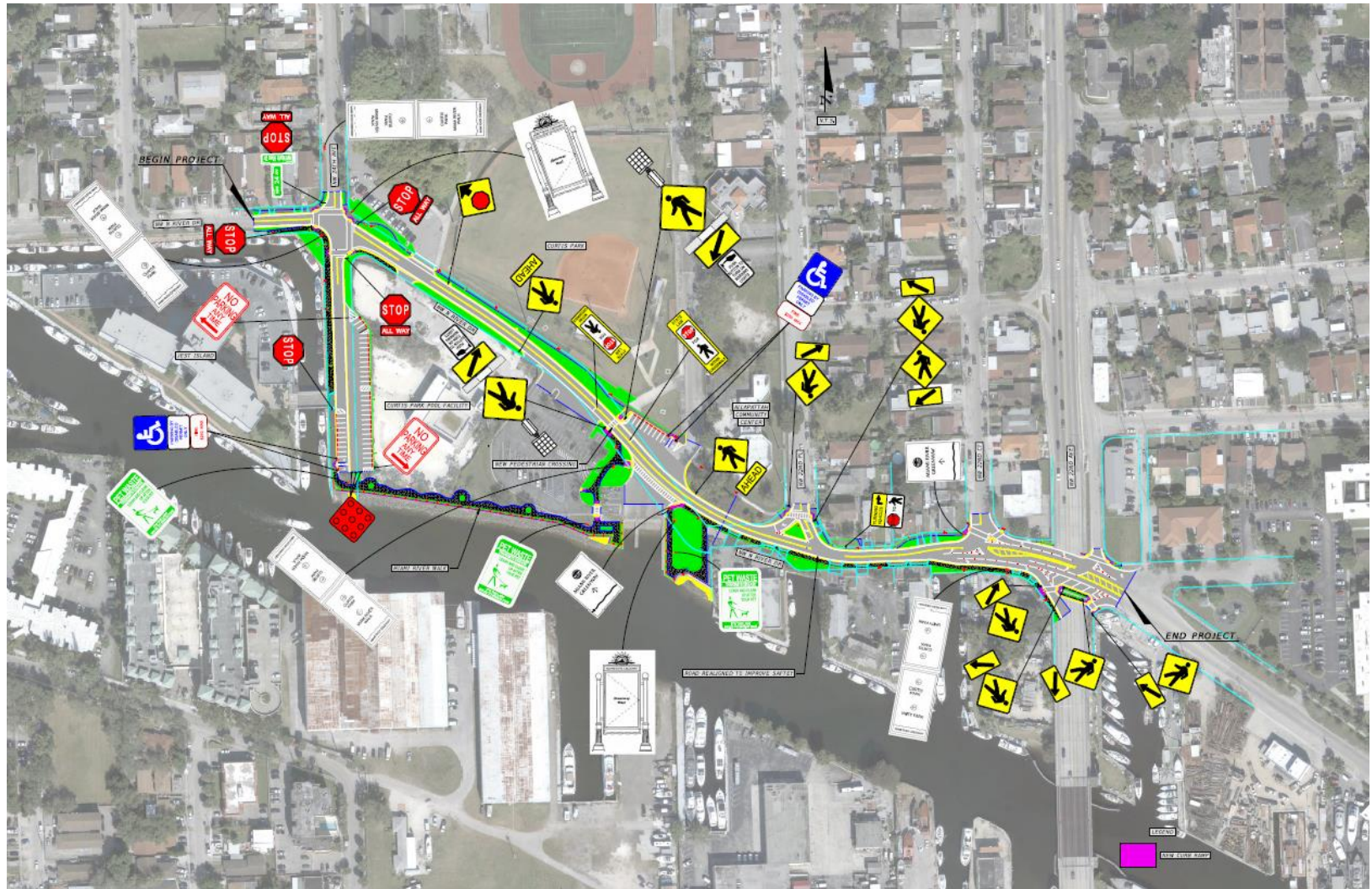
Section A improvements:

- Realignment of NW North River Drive
- Drainage Improvements and new curbs and gutters
- Road reconstruction and milling and resurfacing, paving and markings
- Rectangular Flashing Beacon
- Additional traffic signs
- Pedestrian crosswalks
- Sidewalk replacement, according to Miami River Greenway guidelines
- ADA compliant ramps
- Decorative street lighting
- Improved functionality of boat ramp

Section B improvements:

- Solar pedestrian lighting
- Enhanced pedestrian trail for full park connectivity
- Additional paths within park area on East side of boat ramps
- Pet waste – plastic bag dispensers
- Benches and trash receptacles
- Landscaping improvements
- ADA compliant ramps

Section A improvements:



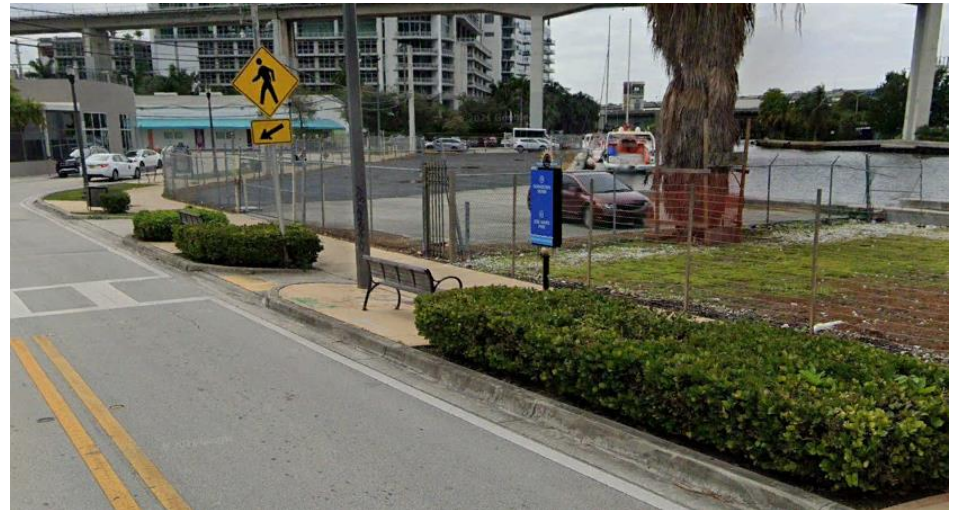
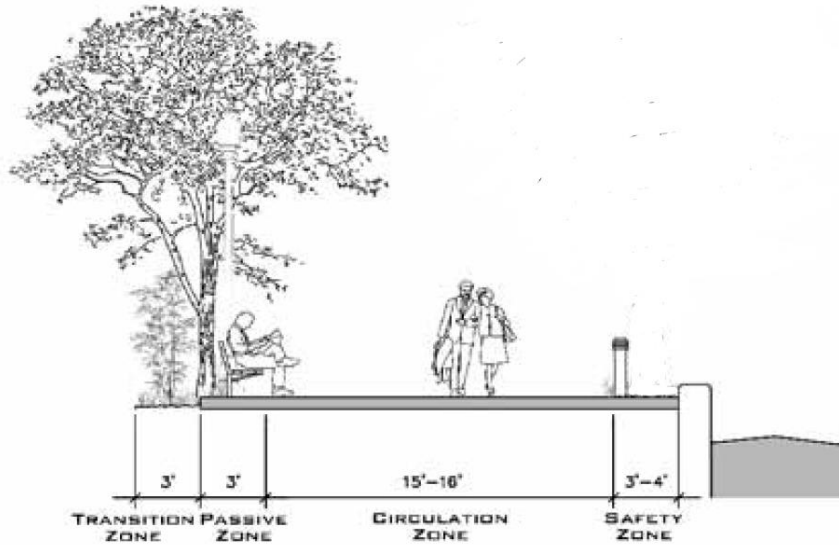
Section A improvements:

Rapid Rectangular Flashing Beacon (RRFB) being installed for pedestrian connectivity



Boat Ramp Functionality is also improved by shifting the roadway towards the North

Section B improvements:



Section 4(f) of the Department of Transportation Act



- ❑ Policy that prescribes the process when a federally funded transportation project requires the use of a significant Section 4(f) property.
- ❑ Section 4(f) properties are:
 - Public Parks and Recreation Areas
 - Public Wildlife and Waterfowl Refuges
 - Public or Private Historic Sites
- ❑ Use can mean:
 - permanent incorporation
 - temporary occupancy
 - proximity impacts to activities, features and attributes of the resource.



Solution: Section 4(f) *de minimis* Determination

- ❑ A *de minimis* impact is one that would not adversely affect the activities, features or attributes that qualify the park for protection under Section 4(f).
- ❑ Work to be done within the Park
 - Roadway reconstruction as part of the re-alignment
 - Construction of the Miami River Greenway path
 - Widening of the sea-wall header and installation of the 3' safety zone as per greenway requirements
 - Sidewalks
 - Drainage
 - Installation of additional landscaping
 - Lighting, benches
 - Trashcans
 - Way-finding signage.
- ❑ FDOT and the City of Miami are going to pursue this determination.

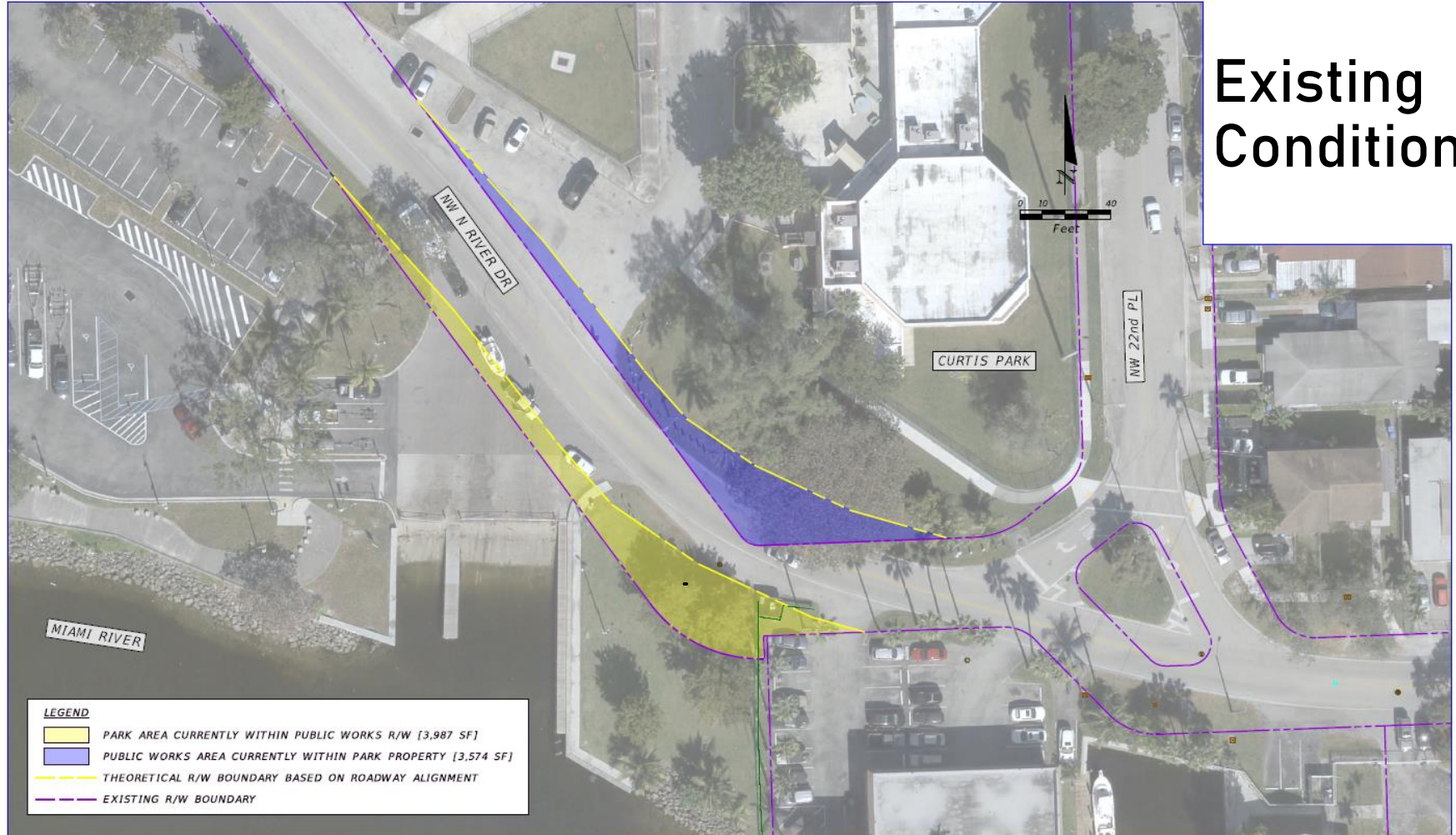


Solution: Section 4(f) *de minimis* Determination

- ❑ Project impacts are minimal and will not adversely affect the activities, features and attributes of Gerry Curtis Park.
- ❑ The Official with Jurisdiction (Parks and Recreation Department) must concur with this finding.
- ❑ Documentation, including Public Involvement, to be included in project file and approved by FDOT.
- ❑ Land transfer between Resilience and Public Works (RPW) and Parks and Recreation Departments
 - ❑ 7,333 square feet (0.17 acres) transfer from RPW to Parks
 - ❑ 3,574 square feet (0.08 acres) transfer from Parks to RPW
- ❑ To be vetted at a City Commission Meeting



Section 4(F) resources: Need land swap between Resilience & Public Works (RPW) and Parks



Existing Condition

LEGEND	
	PARK AREA CURRENTLY WITHIN PUBLIC WORKS R/W [3,987 SF]
	PUBLIC WORKS AREA CURRENTLY WITHIN PARK PROPERTY [3,574 SF]
	THEORETICAL R/W BOUNDARY BASED ON ROADWAY ALIGNMENT
	EXISTING R/W BOUNDARY

MIAMI OCI
BUILDING MIAMI FOREVER
444 S.W. 2ND AVENUE, 8TH FLOOR - MIAMI, FLORIDA 33130
(305) 416-1280 - FAX (305) 416-1283

REVISIONS		
DATE	BY	DESCRIPTION

A&P Consulting Transportation Engineers Corp.
8935 N.W. 35th Lane, suite 200
Doral, FL 33172
(305) 592-7283 / fax: (305) 593-1594
Ethel M. Sierra, P.E. No. 55401

CITY OF MIAMI OFFICE OF CAPITAL IMPROVEMENTS	
PROJECT NAME	PROJECT NO.
CURTIS PARK (EAST)	B-183603
	*DOT FPID No. 440837-1

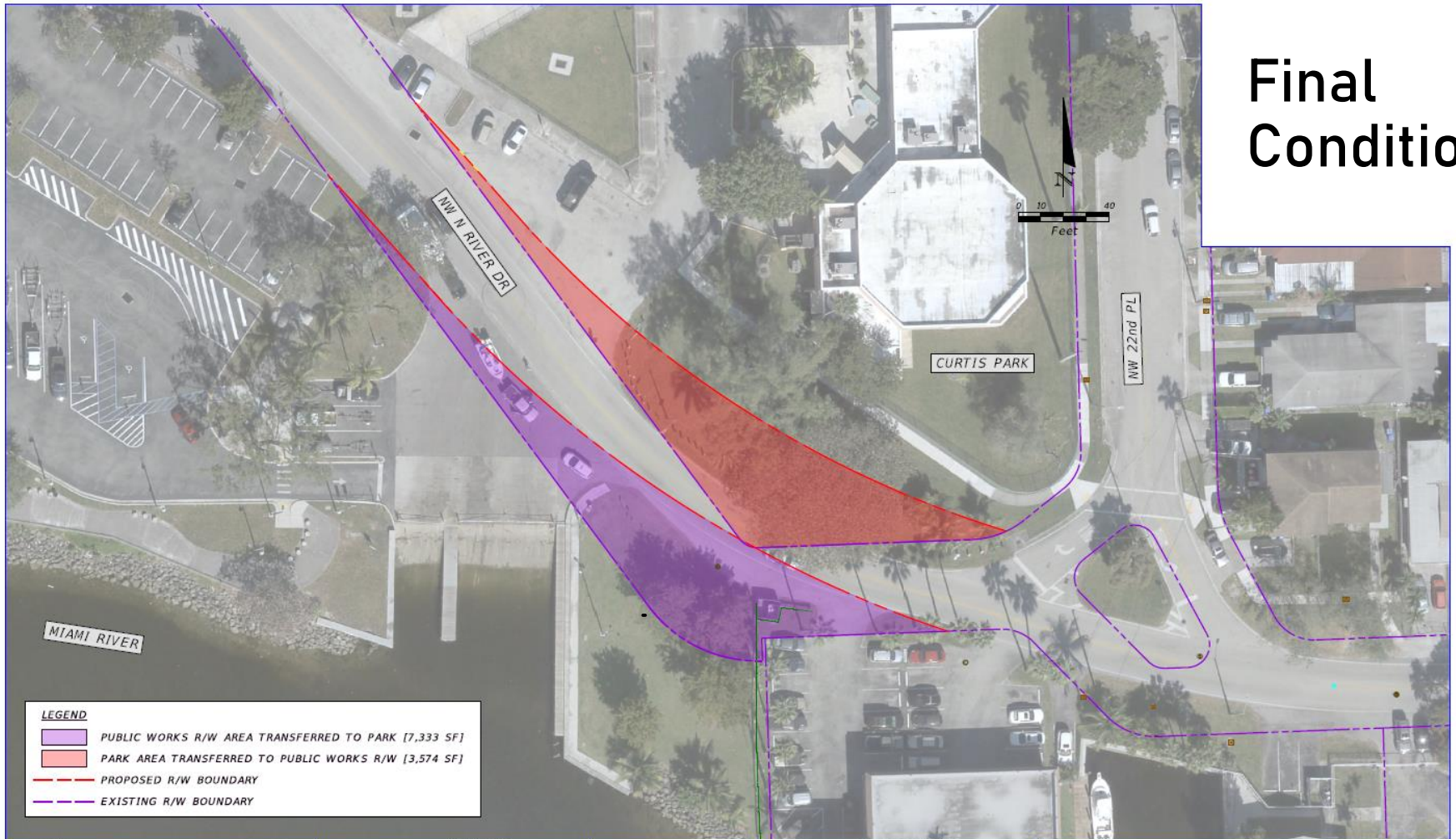
EXISTING SECTION 4(F) CONDITION	

SHEET NO.
EX 1

Section 4(F) resources: Need land swap between Resilience & Public Works (RPW) and Parks



Final Condition



LEGEND

- PUBLIC WORKS R/W AREA TRANSFERRED TO PARK [7,333 SF]
- PARK AREA TRANSFERRED TO PUBLIC WORKS R/W [3,574 SF]
- PROPOSED R/W BOUNDARY
- EXISTING R/W BOUNDARY



MIAMI OCI
 BUILDING MIAMI FOREVER
 444 S.W. 2ND AVENUE, 8TH FLOOR - MIAMI, FLORIDA 33130
 (305) 416-1280 - FAX (305) 416-1233

REVISIONS	
DATE	BY

A&P Consulting Transportation Engineers Corp.
 8835 N.W. 35th Lane, suite 200
 Doral, FL 33172
 (305) 592-7283 / fax: (305) 593-1594
 Ethel M. Sierra, P.E., No. 55401

CITY OF MIAMI OFFICE OF CAPITAL IMPROVEMENTS	
PROJECT NAME: CURTIS PARK (EAST)	PROJECT No. B-183603 FDOT FPIID No. 440837-1

**FINAL SECTION 4(F)
 CONDITION**

SHEET NO. EX 2

SUSERS SDATES SINES SFILES



Schedule

- ❑ Design and Permitting Complete: early December 2022
- ❑ Begin Procurement Phase: late December 2022
- ❑ Begin Construction: September 2023 (estimated)
- ❑ Construction Duration: Approximately one year

Stay in touch: Contact the OCI Outreach Team at (305)416-1280, or via e-mail at askOCI@miamigov.com. Visit our website at: www.miamigov.com/OCI



Any Questions?

Thank you!

