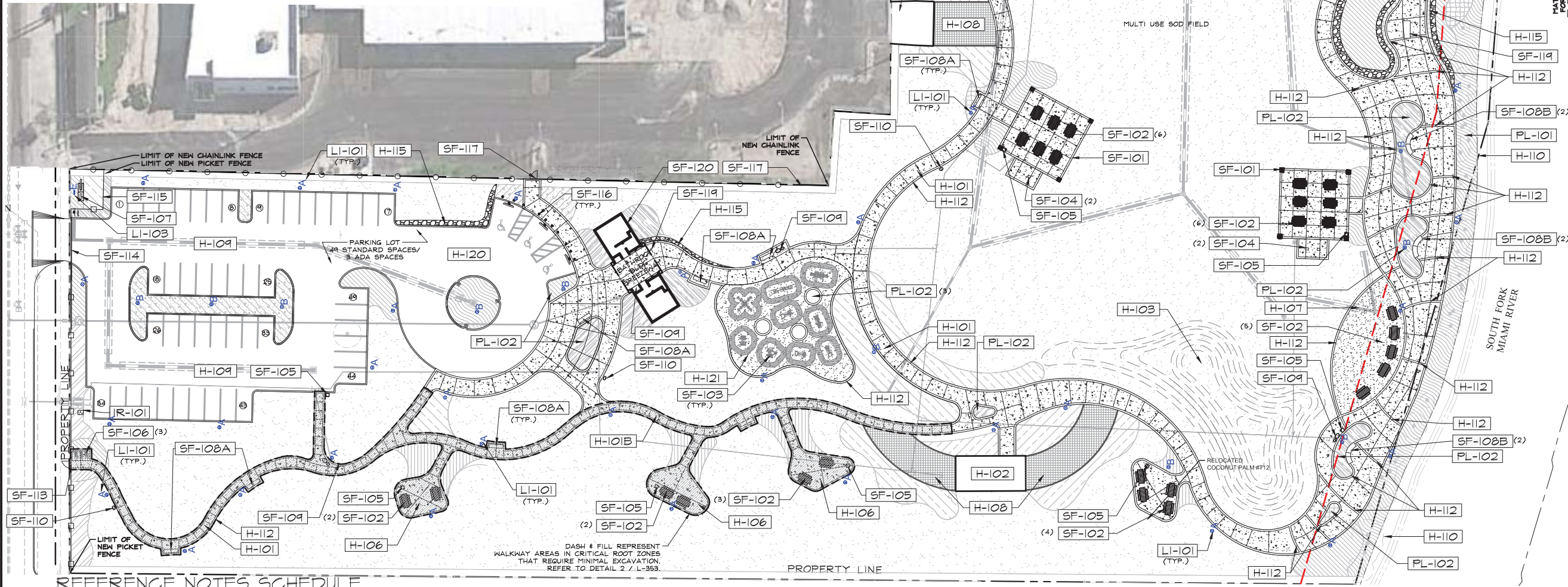
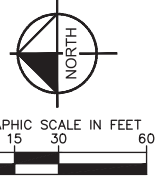




Call 811 or www.sunshine811.com two full business days before digging to have utilities located and marked.
Check positive response codes before you dig!



REFERENCE NOTES SCHEDULE

SYMBOL	HARDSCAPE DESCRIPTION	DETAIL	SYMBOL	SITE FURNISHING DESCRIPTION	DETAIL	SYMBOL	LIGHTING DESCRIPTION	DETAIL
H-101	CONCRETE WALKWAY	1 / L-350	SF-101	40'X40' SHELTER	2,3,4 / EX-5	LI-101	LIGHT POLE	L-500 / SEE MEP
H-102	CONCRETE WALKWAY IN CRITICAL ROOT ZONE	3 / L-353	SF-102	PICNIC TABLE	1 / EX-4	LI-102	LIGHTED BOLLARD	L-500 / SEE MEP
H-103	EXISTING STORAGE BUILDING	REFER TO CIVIL PLANS	SF-103	OUTDOOR EXERCISE EQUIPMENT (9-STATION)	SHEETS EX-1, EX-2, EX-3	LI-103	MONUMENT FLOOD LIGHT	L-500 / SEE MEP
H-104	EXISTING SODDED MOUNDS	REFER TO CIVIL PLANS	SF-104	CHARCOAL GRILL	1 / EX-1	IR-101	38" X 30" CONCRETE PAD WITH SHIP BOOSTER PUMP AND GATE	1 / L-650
H-105	EXISTING WOOD RAMP	REFER TO CIVIL PLANS	SF-105	TRASH RECEPTACLE	3 / EX-4			
H-106	EXISTING BRIDGE	REFER TO CIVIL PLANS	SF-106	BIKE RACK	2 / EX-4			
H-107	CONCRETE PAD FOR PICNIC TABLES	1 / L-350	SF-107	MONUMENT SIGN	1 / L-353			
H-108	GRAVEL AREA	2 / L-350	SF-108A	STANDARD BENCH	1 / EX-6			
H-109	STABILIZED TURF - DRIVEABLE GRASS SYSTEM	3 / L-350	SF-108B	SPECIAL BENCH	2 / EX-6			
H-110	ASPHALT PARKING LOT	REFER TO CIVIL PLANS	SF-109	DRINKING FOUNTAIN	4 / EX-4			
H-111	EXISTING RIP-RAP	REFER TO CIVIL PLANS	SF-110	PET STATION	2 / EX-1			
H-112	EXISTING KAYAK LAUNCH	TO BE COORDINATED	SF-111	NEW PEDESTRIAN GATE	3 / L-352			
H-113	12" WIDE CONCRETE BAND	1 / L-350	SF-112	VEHICULAR SLIDING GATE	1 / L-352			
H-114	COOLITE STONE BOULDER DRY STACK	4 / L-352	SF-113	6' HT. PICKET FENCE	3 / L-352			
H-115	DROP OFF AREA	REFER TO CIVIL PLANS	SF-114	VEHICULAR BOLLARD	3 / EX-6			
H-116	STABILIZED GRAVEL AT FITNESS EQUIPMENT AREA	4 / EX-6	SF-115	NEW 6' HT. CHAIN LINK FENCE & GATE	4 / L-353			
PL-101	LANDSCAPE BUFFER	REFER TO LANDSCAPE PLANS	SF-116	NEW PUBLIC ART PIECE	TO BE PROVIDED BY CITY			
PL-102	LANDSCAPE CUT-OUT	REFER TO LANDSCAPE PLANS	SF-117	RESTROOM BUILDING	REFER TO ARCHITECT'S DRAWINGS			

GENERAL SITE NOTES:
 1. LIMITS OF SCOPE DEFINED BY PROPERTY LINE.
 2. REFER TO CIVIL ENGINEER'S DRAWINGS FOR GRADING, SURFACE DRAINAGE, UTILITY LOCATIONS, AND R.O.W.
 3. REFER TO CIVIL ENGINEER'S DRAWINGS FOR SPOT ELEVATIONS AND FINISH FLOOR ELEVATIONS.
 4. GENERAL CONTRACTOR, SUBCONTRACTORS, AND INSTALLERS SHALL CROSS REFERENCE ARCHITECTURE, ENGINEERING, AND LANDSCAPE DRAWINGS THROUGHOUT IMPLEMENTATION TO ENSURE THE DESIGN INTENT IS MET. ANY DISCREPANCIES SHALL BE NOTED AND BROUGHT TO THE GENERAL CONTRACTOR'S ATTENTION FOR CLARIFICATION WITH THE LANDSCAPE ARCHITECT.
 5. CONTRACTOR SHALL BE RESPONSIBLE FOR VISITING SITE PRIOR TO BIDDING IN ORDER TO FAMILIARIZE THEMSELVES WITH ALL EXISTING CONDITIONS AFFECTING THE WORK, INCLUDING BUT NOT LIMITED TO, PRIVATE AND PUBLIC UTILITIES ON AND OFF SITE, ACCESS ROADS, AND OTHER SUPPORT FACILITIES.
 6. CONTRACTOR MUST NOTIFY LANDSCAPE ARCHITECT IMMEDIATELY OF ANY EXPECTED OR UNKNOWN CONDITIONS OR DISCREPANCIES IN THE DRAWINGS AND CONTRACT DOCUMENTS, AS WELL AS ANY ERRORS OR OMISSIONS ON THE DRAWINGS PRIOR TO PROCEEDING WITH THE WORK OR SHOP FABRICATION.

ARCHAEOLOGICAL REQUIREMENT NOTE
 THE SITE IS CONSIDERED AN ARCHAEOLOGICAL SITE. A CERTIFICATE TO DIG (CTD) IS REQUIRED PRIOR TO CONSTRUCTION. ARCHAEOLOGICAL MONITORING BY A PROFESSIONAL ARCHAEOLOGIST MEETING THE SECRETARY OF THE INTERIOR'S PROFESSIONAL QUALIFICATIONS STANDARDS AND APPROVED BY THE CITY OF MIAMI IS REQUIRED FOR SUBSURFACE EXCAVATION. THE CONTRACTOR IS TO RETAIN AND PAY FOR THE ARCHAEOLOGICAL CONSULTANT TO PREPARE THE CTD TO MONITOR EXCAVATIONS DURING CONSTRUCTION IN ACCORDANCE WITH THE REQUIREMENTS SET FORTH BY THE CITY OF MIAMI HISTORIC PRESERVATION OFFICE. SHOULD THE CONTRACTOR RETAIN A DIFFERENT APPROVED ARCHAEOLOGICAL CONSULTANT, THEY WILL BE REQUIRED TO OBTAIN A NEW LETTER OF AGREEMENT (LOA) AND A CTD AT THEIR OWN EXPENSE. LETTER OF AGREEMENT WAS PREPARED BY JOSEPH F. MANKOWSKI, M.A. RPA, FROM ADVANCED ARCHAEOLOGY, INC. 1126 S. FEDERAL HIGHWAY #263, FT. LAUDERDALE, FLORIDA 33316. 954-270-6624.

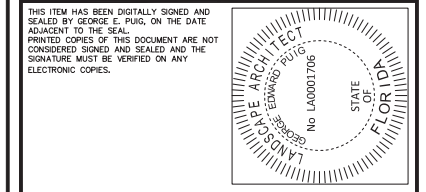
SPACE RESERVED FOR CITY OF MIAMI APPROVAL STAMP



PBA FERN ISLE PARK REDEVELOPMENT
 CITY OF MIAMI, PROJECT NO. B-40543
 2304 N.W. 14TH STREET, MIAMI, FL 33125

HARDSCAPE PLAN

SHEET TITLE:



No.	REVISIONS - SUBMITTALS	DATE
01	PERMIT SET REV 01	03/08/19
02	PERMIT SET REV 02	04/26/19

This document, together with the concepts and designs presented herein, is intended only for the specific purpose and client for which it was prepared. Reuse or improper reliance on this document without written authorization and adaptation by Kimley-Horn and Associates, Inc. shall be without liability to Kimley-Horn and Associates, Inc. Plotted By: Gonzalez, Gregory Sheet Set: PBA Fern Isle Layout: L-300 HARDSCAPE PLAN May 01, 2019 11:07:36am K:\CRG_LRG\043643051 pba fern isle Landscape\CAAD\plansheets\L-300 Hardscape Plan.dwg