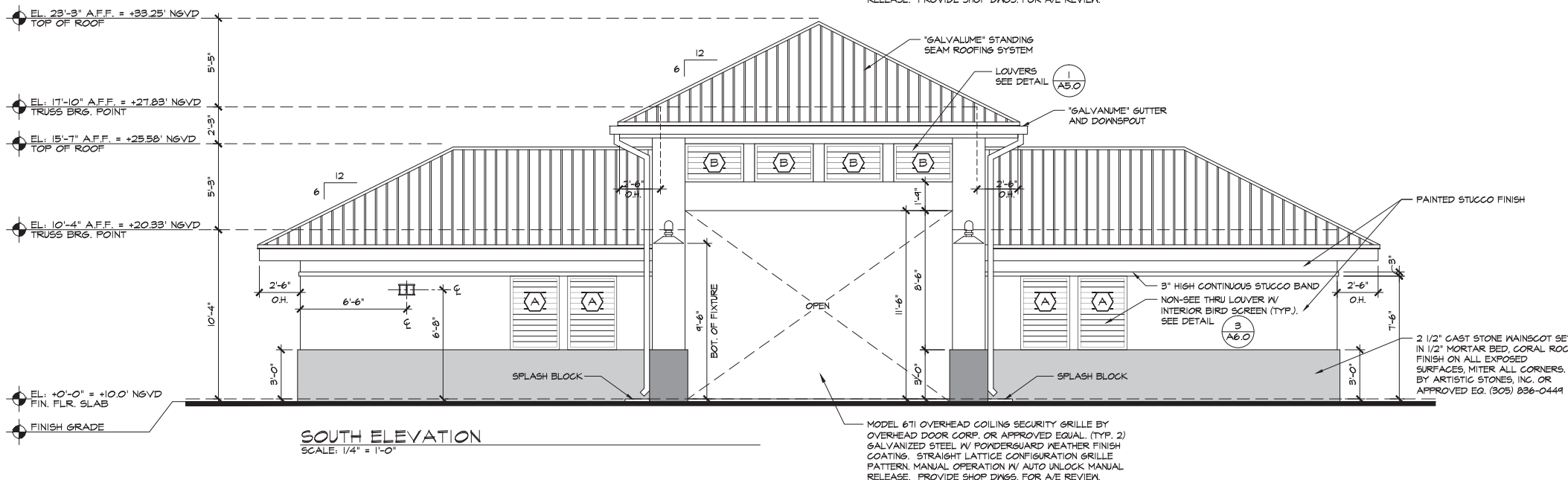
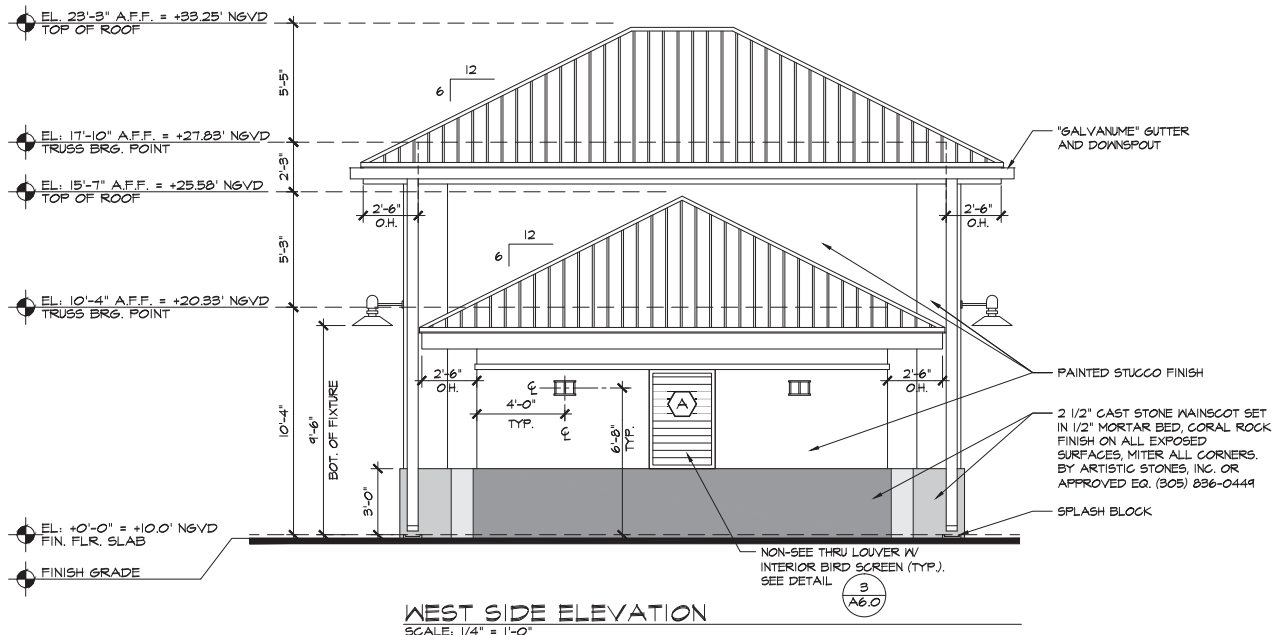


**NORTH ELEVATION**  
SCALE: 1/4" = 1'-0"

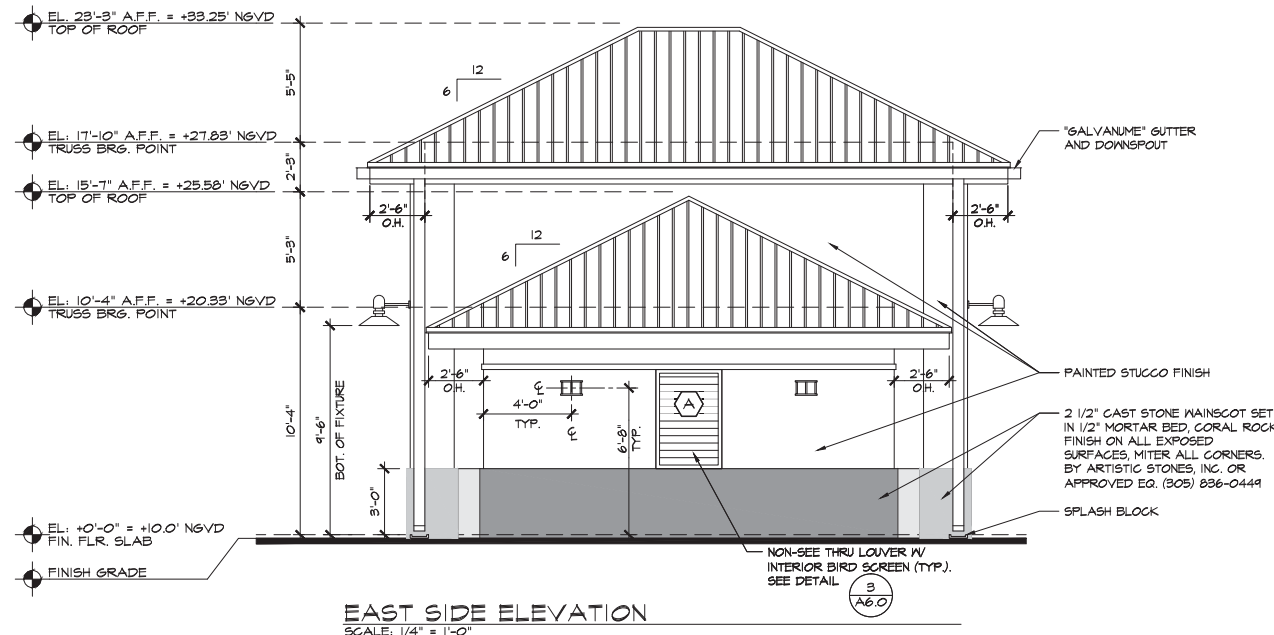


**SOUTH ELEVATION**  
SCALE: 1/4" = 1'-0"

- PAINT: BENJAMIN-MOORE OR PRE-APPROVED U.O.N.
1. ALL STUCCO SURFACES TO RECEIVE ONE COAT ACRYLIC PRIMER-SEALER, PIGMENTED TWO COATS ACRYLIC LATEX SEMI-GLOSS.
  2. INTERIOR OF RESTROOMS AND CUSTODIAL CLOSET TO RECEIVE DEX-O-TEX SEAMLESS WALLCOTE "E" EPOXY SYSTEM OVER 5/8" CEMENTITIOUS BACKER BOARD.
  3. HOLLOW METAL DOORS AND GALVANIZED METAL LOUVERS ONE COAT GALVANIZED METAL PRIMER, TWO COATS ACRYLIC LATEX ENAMEL.
  4. ALL COLORS TO BE AS SELECTED BY ARCHITECT FROM MANUFACTURER'S STANDARD COLORS. G.C. TO PROVIDE COLOR CHART FOR SELECTION.



**WEST SIDE ELEVATION**  
SCALE: 1/4" = 1'-0"



**EAST SIDE ELEVATION**  
SCALE: 1/4" = 1'-0"

SPACE RESERVED FOR CITY OF MIAMI APPROVAL STAMP



**PBA FERN ISLE PARK REDEVELOPMENT**  
CITY OF MIAMI, PROJECT NO. B-40543  
2304 N.W. 14TH STREET, MIAMI, FL 33125

**EXTERIOR ELEVATIONS**

SHEET TITLE:



J. GARY MCGRAW  
ARCHITECT  
FL LICENSE NUMBER  
AR 008072  
DATE: 03.07.2019

No.	REVISIONS - SUBMITTALS	DATE

SHEET No.  
**A-4.0**