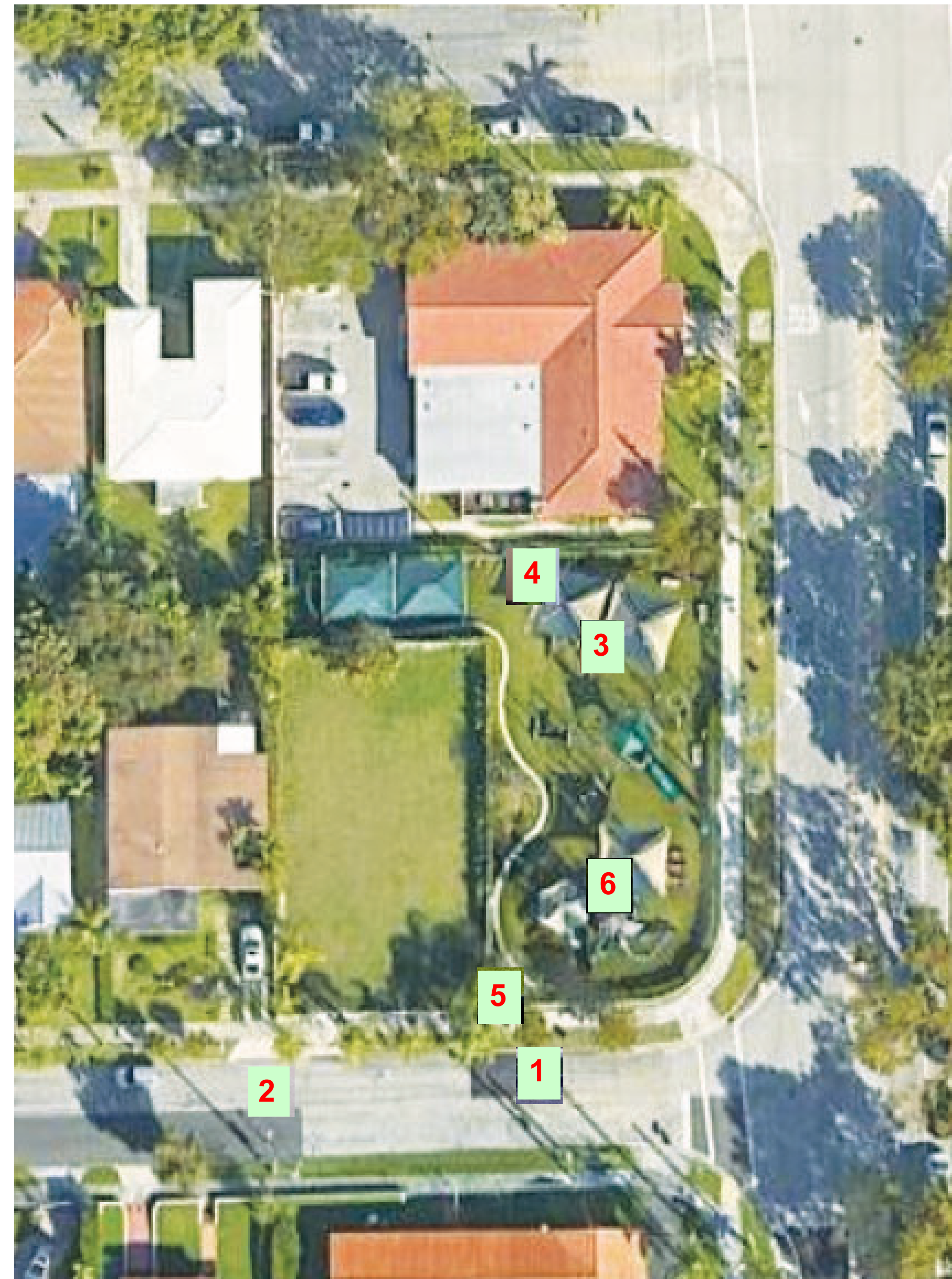




DISTRICT 3  
 COMMISSIONER JOE CAROLLO  
 WITH THE PARKS AND RECREATION DEPARTMENT  
 AND THE OFFICE OF CAPITAL IMPROVEMENTS



CORAL WAY PARK EXPANSION & ENHANCEMENTS  
 SW 12TH AVENUE AND SW 14TH STREET, MIAMI, FL, 33129  
 EXISTING CONDITIONS







**LEGEND**

|  |  |  |                           |
|--|--|--|---------------------------|
|  | EXISTING MULCH                         |  | AREA NOT IN SCOPE OF WORK |
|  | EXISTING LANDSCAPE AREA                |  | NEW RUBBERIZED MULCH      |
|  | DENOTES PROPERTY LINE IN ALL FRONTAGES |  | DENOTES CENTER LINE       |
|  | DENOTES PROJECT LIMIT LINE             |  | DENOTES NEW WALL          |

**PLAYGROUND EQUIPMENT**

|  |   |  |   |
|--|---|--|---|
|  | <b>A. EXPLORER SHIP, MEDIUM</b><br>NRO-SHIP900046 |  | <b>B. DOUBLE TOWER WITH SPIDER NET</b><br>VNRO-2009 |
|  | <b>C. CAROUSEL WITH SEATS</b><br>NRO-120          |  | <b>D. DOLPHIN SPRINGER</b><br>NRO-111               |
|  | <b>E. BEE SPRINGER</b><br>NRO-118                 |  | <b>F. ENTRY SEESAW, 4 PERSONS</b><br>NRO-106        |
|  | <b>G. RELOCATED PLAYGROUND TRAIN</b>              |  | <b>H. PLAYGROUND CANOPY SAILS</b>                   |

**SITE FURNITURE AND EQUIPMENT**  
 NOTE: THIS IS THE BASIS OF DESIGN

|  |   |  |  |  |  |
|--|---|--|--|--|--|
|  | <b>I. DRINKING FOUNTAIN</b><br>MOST DEPENDABLE FOUNTAIN<br>10145-18 SW & SMS3 CHILLED<br>STAINLESS STEEL POWDER COATED<br>FINISH CHROME COLOR |  | <b>J. BICYCLE RACKS</b><br>LANDSCAPE FORMS<br>BOLA BIKE RACK |  | <b>K. LED LIGHT BOLLARDS</b><br>LANDSCAPE FORMS<br>CITY ELEMENTS 180 AA<br>HESSE |
|  | <b>L. BENCH</b><br>LANDSCAPE FORMS<br>STAY BENCH WITH II DIVIDERS TE  |  | <b>M. LITTER RECEPTACLE</b><br>LANDSCAPE FORMS<br>AUSTIN     | <b>PROJECT REDESIGN - SCHEMATIC DESIGN</b> |  |

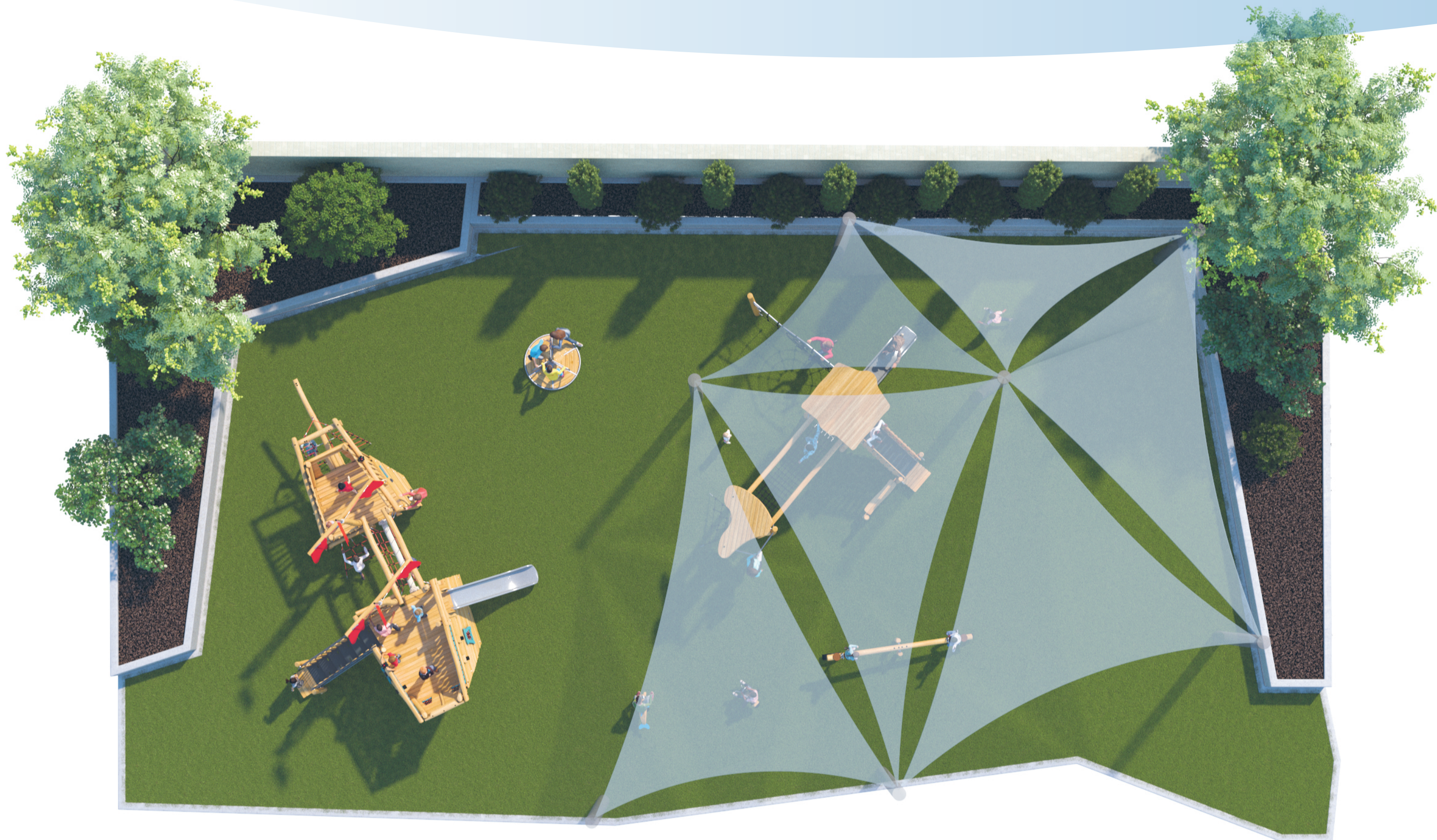
- NOTES**
- LOT DIMENSIONS AND BEARINGS ARE SHOWN FOR REFERENCE. FOR LOT DIMENSIONS, BEARINGS, UTILITIES LOCATION AND GENERAL SITE INFORMATION, REFER TO SURVEY DWGS.
  - FOR SITE GEOMETRY, GRADING, PAVING, DRAINAGE, SIGNAGE, PARKING DIMENSIONS & DETAIL AND SITE UTILITIES DETAILS, REFER TO CIVIL DWGS.
  - FOR LANDSCAPE LAYOUT, REFER TO LANDSCAPING DWGS.
  - FOR SITE LIGHTING DETAILS, REFER TO ELECTRICAL DWGS.
  - GENERAL CONTRACTOR TO COORDINATE STAGING WITH AE.
  - ALL SITE ELEVATIONS SHOWN FOR REFERENCE ONLY. GC TO COORDINATE WITH CIVIL DWGS.
  - ALL SITE ACCESSIBLE ROUTES CROSS SLOPES NOT TO EXCEED 1:50 (2%).
  - FOR ZONING CALCULATIONS, REFER TO SHEET A1.00.
  - FOR TYPE OF VAPOR BARRIER, REFER TO STRUCTURAL DWGS.
  - FOR SOIL PREPARATION, REFER TO STRUCTURAL DWGS.







DISTRICT 3  
 COMMISSIONER JOE CAROLLO  
 WITH THE PARKS AND RECREATION DEPARTMENT  
 AND THE OFFICE OF CAPITAL IMPROVEMENTS



CORAL WAY PARK EXPANSION & ENHANCEMENTS  
 SW 12TH AVENUE AND SW 14TH STREET, MIAMI, FL, 33129  
 DESIGN RENDERS

